

**Board of Directors (in Public)**  
**Item 3.2**

**Subject:** Clinical Network and Cardiac Board Integration  
**Date of meeting:** Wednesday, 31<sup>st</sup> May 2023  
**Presented by:** Jonathan Develing, Director of Strategic Partnerships  
**Purpose of Report:** To note

BAF Ref	Impact on BAF
BAF 10	The system architecture is still maturing, alignment of existing workstreams with that of the ICS and developing networks is key to ensuring that programs are coordinated and complementary so to delivery maximum impact

## 1. Executive Summary

This purpose of this paper is to describe the integration of the newly formed clinical network for cardiology with the existing cardiac board.

The Board of Directors is asked to note the update.

## 2. Background

There has been significant change in the NHS architecture with the introduction of Integrated Care Systems (ICS) abolition of Clinical Commissioning Groups (CCGs) and new regional boundaries for NHS England.

In 2022/23 NHS England introduced new clinical networks, reflecting areas of major disease and national priority. This included presentations for stroke, kidney, respiratory and cardiology as well as well-established network arrangements for Cancer.

At the time of this report clinical networks are an NHS England (NHSE) function, supported with a small program team and workplan that reflects the four national pathways improvements and Cardiovascular Disease (CVD) Prevention.

## 3. Alignment of Cardiac Board and Clinical Network

Pre the introduction of NHSE funded networks, the leadership and oversight of CVD was supported financially and organisationally by Liverpool Heart and Chest Hospital (LHCH) via the CVD Board Chaired by Jane Tomkinson as SRO and CVD Prevention Group chaired by Jonathan Develing.

The introduction of new NHSE funded networks is welcomed and whilst not new, this paper recognises that clinical networks are an important part of building clinical consensus, redesigning pathways, and making recommendation at a regional or sub-regional level.

The strong leadership of the Cardiac Board is testament to progress made hence the introduction of networks with similar workplans afford Cheshire and Merseyside to be in a more advanced position than many systems. It has however caused some confusion as new reporting and governance structure have emerged. To provide clarity, coordination, and a sole purpose it has now been agreed to integrate the workplan of the network with that of the cardiac board, in so doing developing a Cardiac Network Board.

## 4. Cardiac Network Board

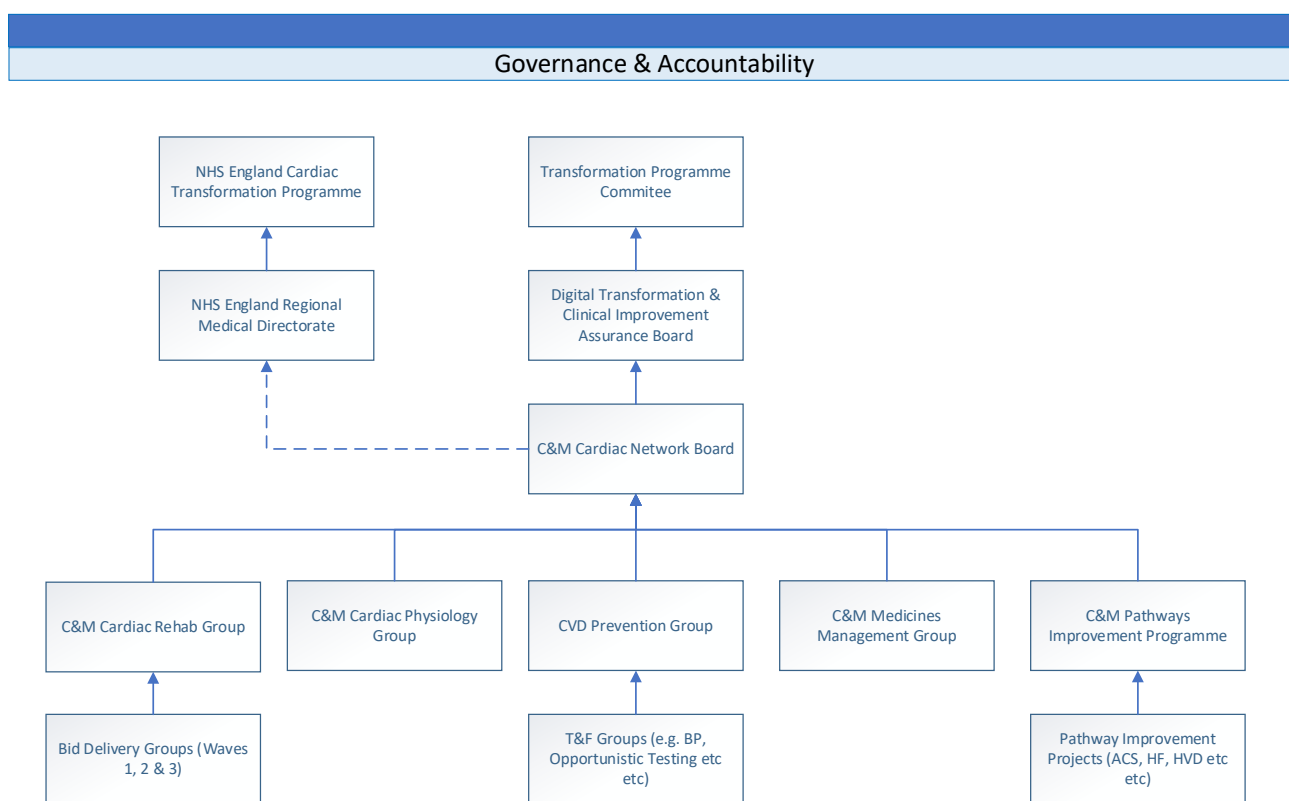
The primary function of the Cardiac Network Board will be to oversee implementation of a comprehensive best practice care provision for the cardiovascular health of the Cheshire & Merseyside population.

The Cardiac Network Board will provide strategic direction for the CVD Prevention, the National Cardiac Transformation Programs (CTP) and local prioritised programs as funded through the Cheshire and Merseyside Integrated Care Board (ICB), transformational fund programs.

The Board will be co-chaired by Jane Tomkinson Senior Responsible Officer, and Mr Joe Mills (LHCH Consultant Cardiologist) and Clinical Lead for the Network.

The Cardiac Network Board is accountable to and will report into the ICB led Digital Transformation & Clinical Improvement Assurance Board, overseen by the Transformation Program Committee

Revised Terms of reference and membership will be presented to the Cardiac Network Board in June 2023.



## 5. Recommendation

The Board of Directors is asked to note the update on the integration of the network and cardiac board.